



## 31 January 2025 | Newsletter #1 Term 1

### Message from our Principal....

Tēna koutou katoa, Goeie dag, 안녕하세요, أهلا, 您好, こんにちは,  
Welcome.....

Kia ora everyone and welcome back to Murrays Bay School for the start of the 2025 school year. We hope that you had a relaxing enjoyable holiday with your families and are looking forward to the year ahead.

Below you will find some information related to the first week of school and what to expect to see when you and your children arrive next week.



### Monday the 3rd of February

As you have been informed through Hero, this is our meet the teacher day. Please book a time to come to school with your child to meet their teacher and discuss the year. This is not our first full school day.

### Tuesday the 4th of February

This is our first full day of school. Please remember that traffic and arrivals to school on the first day can be busy so please make a plan with your child. Wednesday will be a normal school day.

### Thursday the 6th of February (Waitangi Day)

This is a public holiday and school is closed.

### Friday the 7th of February (SCHOOL CLOSED)

As advertised last year our school is closed on Friday. All classes will resume as normal on Monday the 10th of February.

### Other important information before your child starts next week.

- Over the holiday break there has been extensive building work being carried out at school and it is nearing completion. It is safe for families to enter the school on Monday for their 10 minute teacher interview, but please be aware and mindful of the fenced-off areas.
- Due to the construction work, teachers in Pukeko (Year 1) and Karearea (Year 2) have not yet been able to access their classrooms to set them up for the school year. Your child's classroom environment may not be fully ready on Monday but all classrooms will be looking great by Tuesday!
- Uniform: Please ensure your child is in their correct school uniform (including their school hat) for our first full school day on Wednesday the 4th of February.
- New pupils: Parents of new students please refer to your child's start of school information in regards to the arrangements for their first day.
- Traffic and new boom gate: Please be aware that as of this year the school has a new electronic boom gate and therefore there is NO access to the school staff car parks for parents during school hours. All our pedestrian access points are still fully operational.
- Parents please also be patient with your drop-offs and pick-ups at the start and end of school days. Please also remember that our two drop-off zones are NOT to be parked in.

Kind Regards,  
Hayden Iles  
Tumuaki - Principal

## UPCOMING EVENTS

	Monday	Tuesday	Wednesday	Thursday	Friday
WEEK 1	<b>3 FEBRUARY</b> Meet the teacher - 10 minute appointments	<b>4 FEBRUARY</b> First day of classes	<b>5 FEBRUARY</b>	<b>06 FEBRUARY</b> WAITANGI DAY - SCHOOL CLOSED	<b>07 FEBRUARY</b> SCHOOL CLOSED
WEEK 2	<b>10 FEBRUARY</b>	<b>11 FEBRUARY</b> PTA Meeting	<b>12 FEBRUARY</b>	<b>13 FEBRUARY</b>	<b>14 FEBRUARY</b>
WEEK 3	<b>17 FEBRUARY</b>	<b>18 FEBRUARY</b>	<b>19 FEBRUARY</b>	<b>20 FEBRUARY</b>	<b>21 FEBRUARY</b>

## 2025 Term Dates

TERM <b>01</b> 2025	<b>03 February - 11 April</b> <i>03 February Meet the Teacher Interviews</i> <i>07 February School Closed</i>
TERM <b>02</b> 2025	<b>28 April - 27 June</b>
TERM <b>03</b> 2025	<b>14 July - 19 September</b>
TERM <b>04</b> 2025	<b>06 October - 18 December</b>

**Teacher Only Days**  
 Monday, 24 March  
 Friday, 30 May

[LINK TO SCHOOL CALENDAR](#)





We have a compulsory school uniform at MBPS.

It is very smart & we encourage students to wear it with pride.



**Please help us to keep it looking smart by ensuring your child is wearing the correct uniform to school each day**

**KEY UNIFORM REMINDERS**

- Plain black shoes
- Navy socks
- Navy bucket hat compulsory for terms 1 & 4
- Only approved uniform items to be worn
- Undergarments should not be visible under uniform



Murrays Bay Primary School

**NO HAT,  
NO PLAY  
TERMS 1 & 4**


MONDAY  
**23°C**  
sunny 

TUESDAY  
**24°C**  
Rain 

WEDNESDAY  
**19°C**  
Sunny 

THURSDAY  
**30°C**  
Sunny 

FRIDAY  
**28°C**  
Cloudy 

SATURDAY  
**15**  
Snowy 

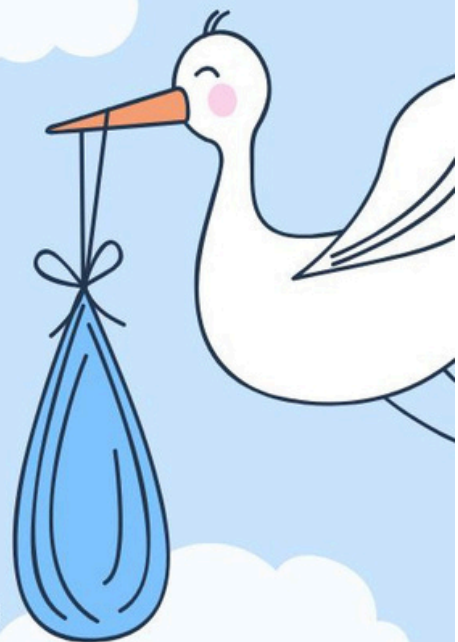
**Hat must be plain navy bucket hat**

WILL YOUR BABY BE OUR NEXT TEACHER FOR OUR

# *Roots of Empathy Programme 2025*

Ideally born between  
November 2024-January 2025, can be a  
friend of our school community!

Please email [liz@murraysbay.school.nz](mailto:liz@murraysbay.school.nz) for  
more information



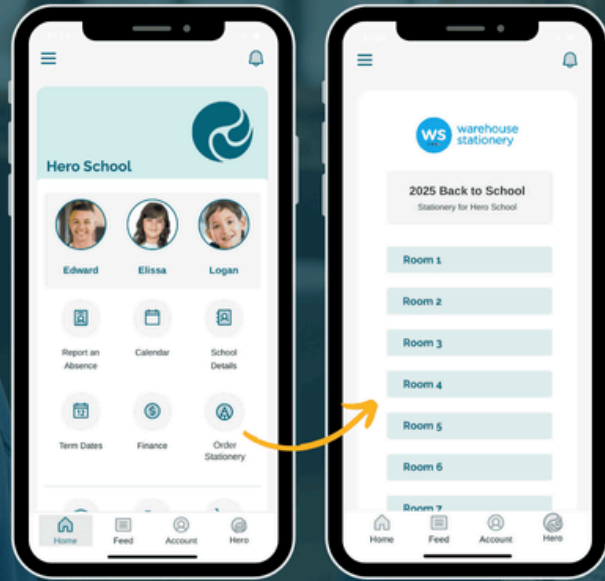




# BACK TO SCHOOL STATIONERY



Order through the Hero App!



We are super excited to have teamed up with the heroes at Warehouse Stationery for our 2025 stationery requirements, helping make stationery ordering a breeze by seamlessly integrating with the Hero Parent App!

Before the end of 2024, you will see the 'Order Stationery' icon appear on the landing page of your Hero App. This will direct you straight to your child's school stationery list for 2025.

Stationery list orders can be made at any time, however to get the best deals, Warehouse Stationery's Back to School pricing will go live on Wednesday 1st January 2025, with both delivery and click and collect options available.

11:11

Friday, January 31



### FRIENDLY REMINDER

The school day starts at 8.55am, students should be in their class at this time ready for learning



### TIP OF THE DAY

Students arriving before 8.30am or remaining at school after 3pm MUST be actively supervised by an adult



### DON'T FORGET

To keep up to date with our school website & Facebook page for lots of useful information





AMAZING

**OPEN**  
**WEDNESDAY**  
**8.30 - 9.15AM**  
**2.45 - 3.15 PM**

Located in school hall  
Cash or bank transfer only  
[pta@murraysbay.school.nz](mailto:pta@murraysbay.school.nz)

Donations of good quality 2nd hand uniform always appreciated!!

SECOND CHANCE  
SCHOOL UNIFORMS

